

ORFLO Technologies  
260 Northwood Way  
Ketchum, ID 83440  
[www.orflo.com](http://www.orflo.com)

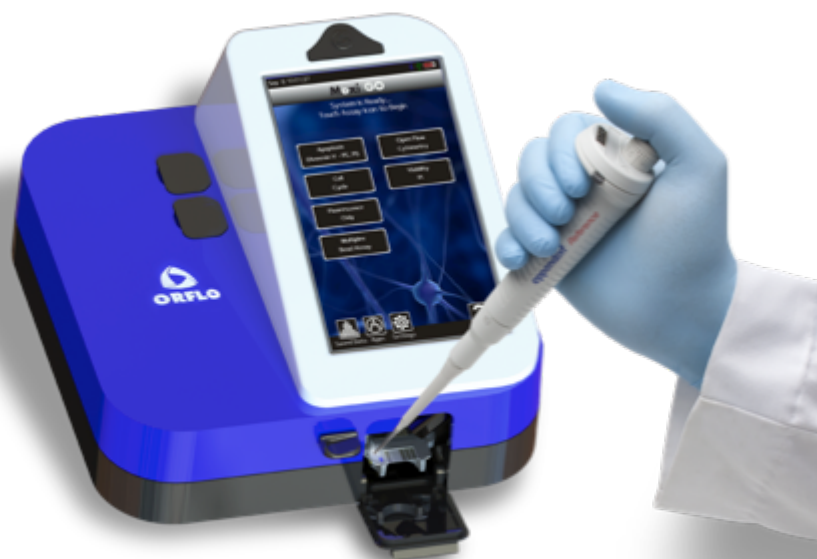
TEL 855.879.6694  
FAX 866.804.3512

**Moxi GO II**



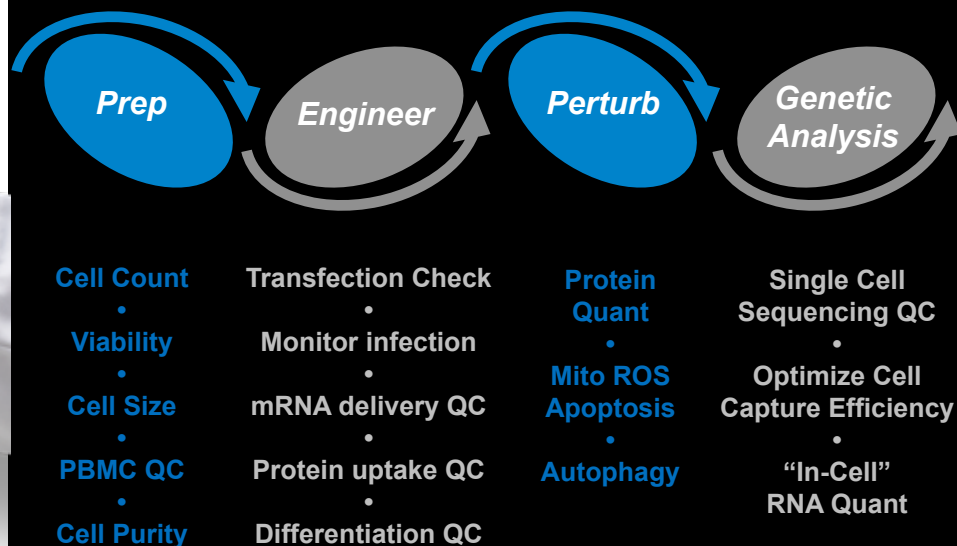
You're about to look at **Cell QC** in a whole new way

## INTRODUCING



**Moxi GO II**

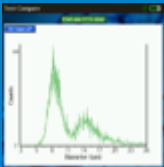
Moxi Go II takes the pain out of routine Cell QC through fully automating applications spanning standard cancer and disease research workflows, at an amazingly affordable price.



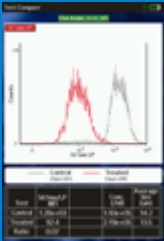
*Affordable • Portable • Maintenance Free • Single Button Operation*

*Drive lab efficiency, improve results, ensure downstream success*

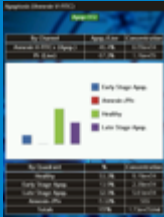
MoxiGo II deploys ORFLO's proprietary integrated cell count, size determination technology with traditional flow cytometric based fluorescence detection utilizing a disposable flow cell. This unique combination of detection technology and ORFLO's proprietary OS enables gold standard cell count accuracy, precision and cell QC assay flexibility. Catch comprised samples prior to costly downstream research efforts while simultaneously accelerating time to experimental conclusions.



**Completely automated Cell count/size/viability**  
Moxi Go II utilizes proprietary algorithms to auto-find both the live and dead cell population, while excluding debris, cell fragments and RBC contamination by size to deliver a highly accurate, repeatedly result.

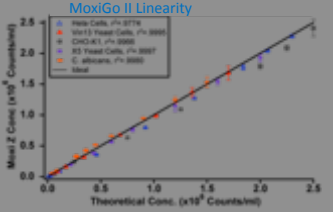
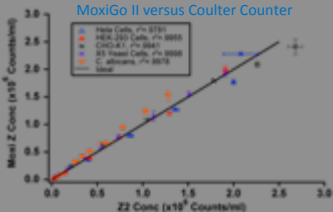


**Rapidly QC target cellular responses**  
Moxi Go II enables high throughput, quantitative QC of cellular response to experimental treatments, compound libraries and genetic modifications with a highly intuitive OS. Data files are easily transferred to networked computers for investigational studies.

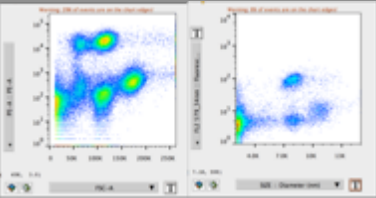


**Sophisticated Cell Health QC**  
Moxi Go II is the ideal tool for industrial cell QC. With its compact portable footprint Moxi Go II is ideal for bioreactor monitoring of cell vitality and other key health indicators. Utilize the platform for process development, ensuring successful fermentation in brewing applications and monitoring cell health for monoclonal antibody production

Benchmark versus vision



Benchmark versus flow

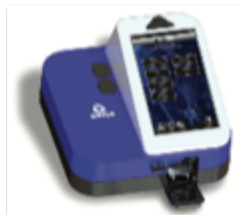


# W O R K F L O W

1

## Prepare Sample

- Use one of ORFLO's validated kits or create your own cocktail.



2

## Insert Cassette

- Moxi GO will auto-align to the cassette and auto-calibrate.

3

## Pipette Sample

- Pipette prepared sample.
- Close door; test will complete in ~ 10 seconds.



4

## Analyze Results

- Adjust and store gates on device.
- Drag & Drop screen shots for instant lab reports.
- Save file (FCS 3.1) for offline analysis.



## Specifications

### Instrument

- 488 nm laser excitation
- 3 Fluorescent detection channels (PMTs)
- Cell count and size
- 10nm histogram cell size binning
- 9.3" x 8.7" x 5.8" (8lbs)
- 7" LCD touch screen display
- ORFLO OS
- On board 16MB flash data storage
- USB "on-the-go" (PC or Mac compatible)
- Pre-programmed single touch and go apps

### CytoChip Performance

- 3-30  $\mu\text{m}$  cell size range
- 14-9200 fL cell volume detection range
- 75  $\mu\text{L}$  test volume
- 20 second read time
- 10,000 to 1M cells/ml concentration range



Available in the UK:  
01582 704807  
[www.meritics.com](http://www.meritics.com)  
[info@meritics.com](mailto:info@meritics.com)